

Converting GSD & GRA Files Using the Free Roland Driver

It may be a good idea to print these instructions.

Before you start right click on your desktop and choose 'new' then 'new folder' name the folder that appears on your desktop 'My Roland' (this is where you will save the driver)

Now you need to download and save the Roland Driver from here:-

<http://dg4.roland.co.jp/en/cutting.html#sv81215>

You should see this screen

click here and choose SX 15

choose which driver relates to your operating system

You will now see this

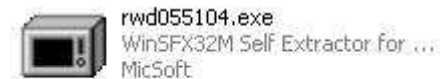
click on download

When you click on 'download' click on 'save' then from the box that appears, use the drop down arrow next to 'save in' and choose desktop and find your 'my roland' folder.

You should now have this



Double click on the Roland driver icon



In the Open File options window click on Run

This opens the Stika Driver window, and will show the path where the driver will be installed. (your desktop/my roland folder)

Click OK

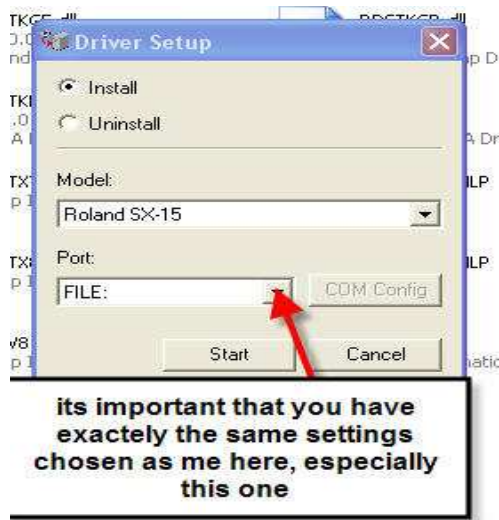
Open your new folder and you should have a sub folder like this



Double click on the yellow folder RWD055_Stika_Driver etc

And look for the SETUP.EXE file and double click on it

You should see this



It may not look like this but make sure you have or put a tick in the circle next to Install and that you have chose Roland SX 15 in model and the important thing is you have to have FILE chosen under 'Port'

Click start

You will then see this



That's the download and install complete.

See the video on my website now for how to convert your gsd files

www.aandhcrafts.co.uk